



Diligence WiFi

Quick Start Guide



Disposal and Recycling Information
You must dispose of Diligence WiFi products according to relevant laws and regulations. Diligence WiFi products contain electronic components and lithium polymer batteries and therefore they must be disposed of separately from household waste.

Using Connectors and Ports
Never force a connector into a port; check for obstruction in the port, make sure that the connector matches correctly in relation to the port. If the connector and port do not join with reasonable ease they probably do not match and should not be used.

Charging
Only use a USB Power Adaptor or a USB port on another device to charge Diligence WiFi products. Read all safety instructions for any third party products and accessories before use with this product. Comark Instruments is not responsible for the operation of any third party accessories or their compliance with safety and regulatory standards. We do not recommend charging the battery when the unit is at 40°C (104°F) or above. Some of our products employ safety features to prevent this.

Repairing or Modifying
Never attempt to repair or modify Diligence WiFi products. Dismantling Diligence WiFi products, including the removal of external screws, may cause damage that is not covered under the warranty. Servicing should only be provided by an authorised supplier.

WARNING: Failure to follow these safety instructions could result in fire, electrical shock, other injury or damage.

Important Safety Information



Getting Started

The data logger will arrive partly charged but ideally you should charge it for 24 hours before use for optimum performance. The data logger will automatically start recharging while connected to a PC or USB charger using the USB cable provided.

The battery icon has three states:



1 Not Displayed
Battery OK



2 Flashing
Battery Low - Recharge!

3 Solid
Battery Charging

Installing software

The data logger may already be displaying a reading but it will not be configured or connected to your WiFi network until you complete the product set-up.

To set up the unit use our free Diligence WiFi PC software available to download from the 'Software' section in Information at www.comarkinstruments.com.

For the USA, free Diligence WiFi PC software is available to download from the 'Software' section in Quick Links at www.comarkusa.com.



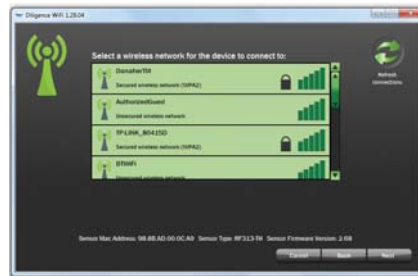
Data Logger Set-up

Connect the Diligence WiFi Data logger to the PC's USB port with the USB cable provided.

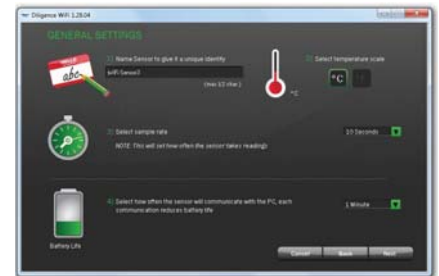
Double click on the Diligence WiFi icon on your Windows™ desktop. This will load the wizard configuration software. Follow the on-screen instructions to set up your data logger.



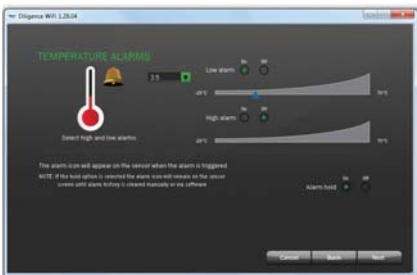
- 1 Click on the 'Set-Up Data logger' button



- 2 Click on your network and enter your password if required



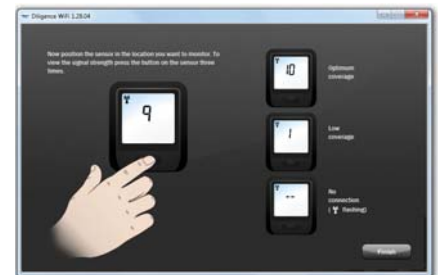
- 3 Name your data logger, select temperature scale, sample rate and transmission Rate



- 4 Set high and low alarms



- 5 Data logger set-up is now complete



- 6 Position your data logger where you wish to take readings

Note: These screens will vary depending on which data logger model purchased.

Data logger Placement

When placing the data logger consider local heat sources and radio obstructions. Any physical obstructions between router and data logger will affect the signal range. WiFi extenders can be used if required to increase range where signal strength is limited in the area to be monitored.

The signal icon has three states:



- 1 Not Displayed
The data logger has not yet been set-up and configured to a WiFi network




- 2 Flashing
The data logger is not communicating with the Diligence WiFi software



- 3 Solid
The data logger is successfully communicating with the Diligence WiFi software

Hints and Tips

Use the  button on the home screen to get more help on setting up your data loggers

Changing Data logger Settings via WiFi

Data loggers can be configured via WiFi without the need of reconnecting the USB cable.